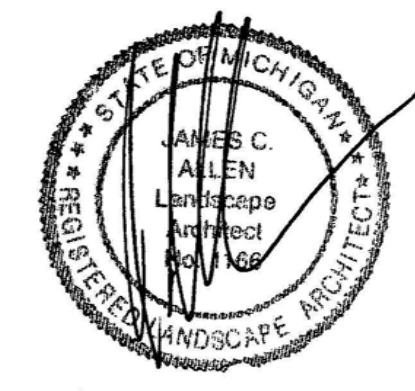


Seal:



Title:
Landscape Plan

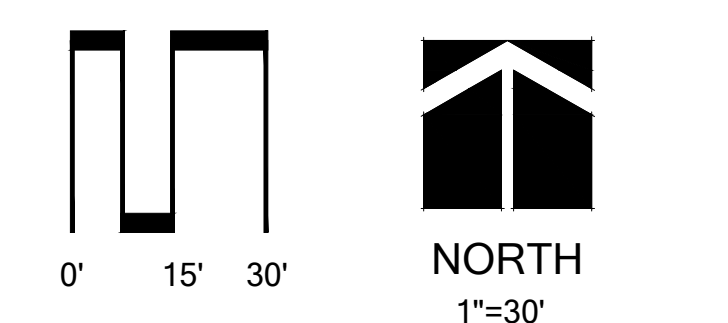
Project:
**Meadowbrook Country Club
 Northville Township, Michigan**

Prepared for:
 Meadowbrook Country Club
 40941 West Eight Mile
 Northville, Michigan 48167

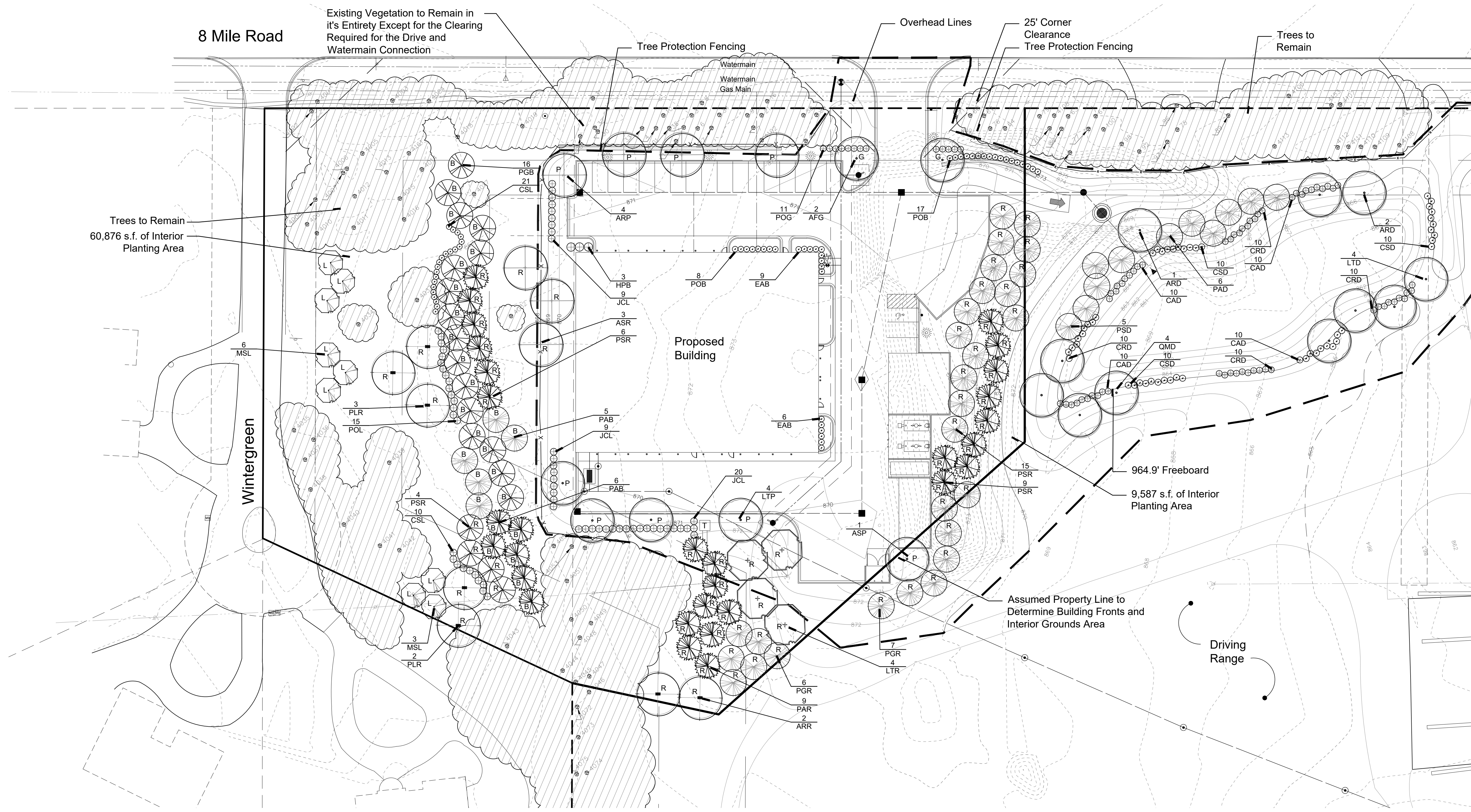
Revision:	Issued:
Submission	May 28, 2021
Revised	August 26, 2021
Engineering Review	December 17, 2021
SP Revision	February 7, 2022
	March 8, 2022

Job Number:
 21-039

Drawn By: jca Checked By: jca



Sheet No.



Landscape Summary

Street Trees 8 Mile Street Frontage Trees Required Trees Provided	410 l.f. 10 Trees (410' / 40') 17 Existing	Parking Lot Landscaping Paved Area Trees Required Trees Provided	25,308 s.f. 8.4 Trees (25,308 / 3,000) 9 Trees
Wintergreen Street Frontage Trees Required Trees Provided	272 l.f. 7 Trees (272' / 40') 7 Existing	Building Fronts and Interior Grounds Site Area Less Parking Less Greenbelts Net Site Area	119,887 s.f. 25,308 s.f. 22,471 s.f. 72,108
Greenbelt 8 Mile Greenbelt Length Less Preserved Greenbelt Net Greenbelt	410' 340' 70'	Interior Planting Area Required Interior Planting Area Provided Trees Required Trees Provided Shrubs Required Shrubs Provided	10,816 s.f. (72,108 x 15%) 70,463 s.f. 27 Trees (10,816 / 400) 27 Trees 43 Shrubs (10,816 / 250) 43 Shrubs
"G" Trees Required Trees Provided Shrubs Required Shrubs Provided	1.75 Trees (70' / 40') 2 Trees 10.5 Shrubs (70' / 40') x 6 11 Shrubs	Retention Pond Freeboard Length Deciduous and Evergreen Required Deciduous and Evergreen Provided Shrubs Required Shrubs Provided	551 l.f. 22 Trees (551 / 50) x 2 22 Trees 110 Shrubs (551 / 50) x 6 110 Shrubs
Land Use Buffer A Land Use Buffer Length Trees Required Trees Provided Shrubs Required Shrubs Provided	419' 42 Trees (419' / 20') x 2 42 Trees (33 Existing) 84 Shrubs (419' / 20') x 4 84 Shrubs	Woodland Replacement Replacement Required Replacement Trees Caliper Provided Remaining Caliper to be Provided	316" 202" 114"

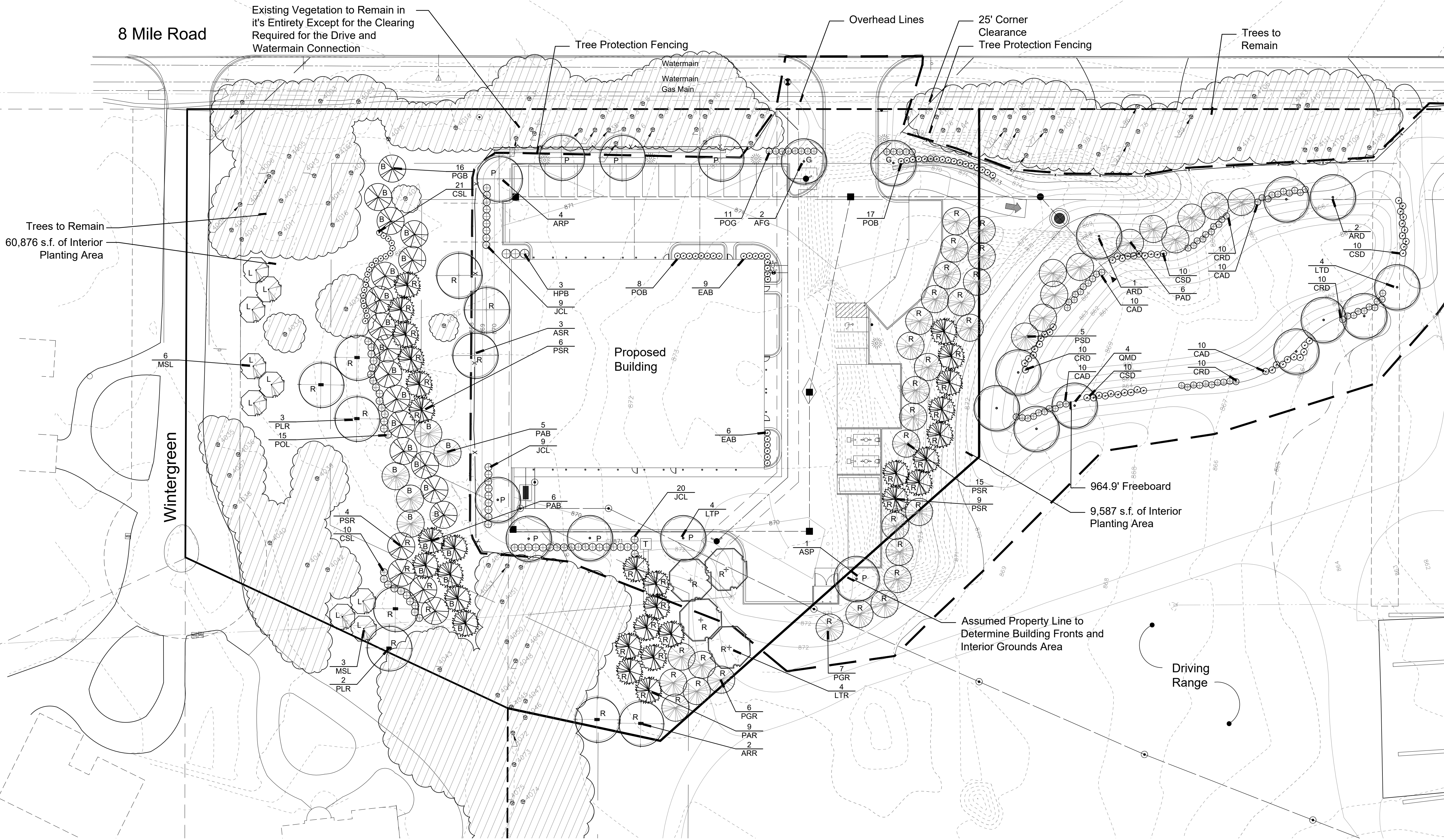
The Remaining 114" will be Planted at Locations to be Determined on the Meadowbrook Country Club Property.

Plant List

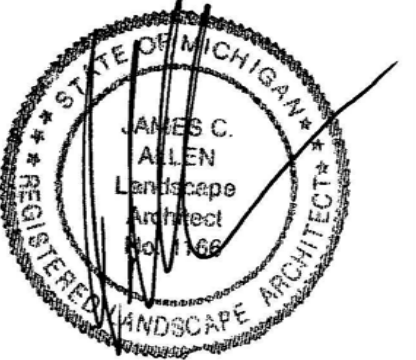
sym.	qty.	botanical name	common name	caliper	spacing	root	height
Greenbelt							
AFG	2	Acer x. freemanii 'Autumn Blaze'	Autumn Blaze Maple	3.0"	as shown	B&B	
POG	11	Physocarpus opulifolius 'Summer Wine'	Summer Wine Ninebark		as shown	cont	36"
	2	Trees Provided					
	11	Shrubs Provided					
Land Use Buffer							
CSL	31	Cornus sericea 'Artic Fire'	Artic Fire Dogwood		as shown	cont	36"
JCL	38	Juniperus ch. 'Keteleer'	Keteleer Juniper		as shown	B&B	6'
MSL	9	Malus 'Spring Snow'	Spring Snow Crab	2.5"	as shown	B&B	
POL	15	Physocarpus opulifolius 'Summer Wine'	Summer Wine Ninebark		as shown	cont	36"
	9	Trees Provided					
	84	Shrubs Provided					
Parking Lot							
ARR	2	Acer rubrum 'October Glory'	October Glory Red Maple	3.0"	as shown	B&B	
ASP	1	Acer saccharum 'Green Mountain'	Green Mountain Sugar Maple	3.0"	as shown	B&B	
LTP	4	Liriodendron tulipifera	Tulip Tree	3.0"	as shown	B&B	
	9	Trees Provided					
Building Fronts and Interior Grounds							
EAB	15	Euonymus alata 'Compacta'	Compact Burning Bush		as shown	cont	36"
HPB	3	Hydrangea paniculata 'Little Quickfire'	Little Quickfire Panicle Hydrangea		as shown	cont	36"
PAB	11	Picea abies	Norway Spruce		as shown	B&B	8'
PGB	16	Picea glauca 'Densata'	Black Hills Spruce		as shown	B&B	8'
POB	25	Physocarpus opulifolius 'Summer Wine'	Summer Wine Ninebark		as shown	cont	36"
	27	Trees Provided					
	43	Shrubs Provided					
Woodland Replacements							
ARR	2	Acer rubrum 'October Glory'	October Glory Red Maple	3.0"	as shown	B&B	
ASR	3	Acer saccharum 'Green Mountain'	Green Mountain Sugar Maple	3.0"	as shown	B&B	
LTR	4	Liriodendron tulipifera	Tulip Tree	3.0"	as shown	B&B	8'
PAR	19	Picea abies	Norway Spruce		as shown	B&B	8'
PGR	13	Picea glauca 'Densata'	Black Hills Spruce		as shown	B&B	8'
PLR	5	Platanus x acerifolia 'Exclamation'	Exclamation London Planetree	3.0"	as shown	B&B	
PSR	24	Pinus strobus	White Pine		as shown	B&B	8'
	42	Deciduous Tree Inches Provided (14 X 3)					
	160	Evergreen Tree Inches Provided (8' / 2.8) x 56					
	202	Total Inches					

sym.	qty.	botanical name	common name	caliper	spacing	root	height
Detention Pond							
ARD	3	Acer rubrum 'October Glory'	October Glory Red Maple	3.0"	as shown	B&B	
CAD	40	Cornus amomum	Silky Dogwood		as shown	cont	36"
CRD	40	Cornus racemosa	Gray Dogwood		as shown	cont	36"
CSD	30	Cornus sericea	Recoiter Dogwood		as shown	cont	36"
LTD	4	Liriodendron tulipifera	Tulip Tree	3.0"	as shown	B&B	
PAD	6	Picea abies	Norway Spruce		as shown	B&B	8'
PSD	5	Pinus strobus	White Pine		as shown	B&B	8'
OMB	4	Quercus macrocarpa	Burr Oak	3.0"	as shown	B&B	8'
	110	Shrubs Provided					
	22	Trees Provided					





Seal:



Title:
Landscape Plan

Project:
**Meadowbrook Country Club
 Northville Township, Michigan**

Prepared for:
 Meadowbrook Country Club
 40941 West Eight Mile
 Northville, Michigan 48167

Revision:	Issued:
Submission	May 28, 2021
Revised	August 26, 2021
Engineering Review	December 17, 2021
SP Revision	February 7, 2022
	March 8, 2022

Landscape Summary

Street Trees 8 Mile		Parking Lot Landscaping Paved Area	25,308 s.f.
Street Frontage	410 l.f.	Trees Required	8.4 Trees (25,308 / 3,000)
Trees Required	10 Trees (410' / 40')	Trees Provided	9 Trees
Trees Provided	17 Existing	Building Fronts and Interior Grounds Site Area	119,887 s.f.
Wintergreen		Less Parking	25,308 s.f.
Street Frontage	272 l.f.	Less Greenbelts	22,471 s.f.
Trees Required	7 Trees (272' / 40')	Net Site Area	72,108
Trees Provided	7 Existing	Interior Planting Area Required	10,816 s.f. (72,108 x 15%)
Greenbelt		Interior Planting Area Provided	70,463 s.f.
8 Mile		Trees Required	27 Trees (10,816 / 400)
Greenbelt Length	410'	Trees Provided	27 Trees
Less Preserved Greenbelt	340'	Shrubs Required	43 Shrubs (10,816 / 250)
Net Greenbelt	70'	Shrubs Provided	43 Shrubs
G* Trees Required	1.75 Trees (70' / 40')	Retention Pond Freeboard Length	551 l.f.
Trees Provided	2 Trees	Deciduous and Evergreen Required	22 Trees (551 / 50) x 2
Shrubs Required	10.5 Shrubs (70' / 40') x 6	Deciduous and Evergreen Provided	22 Trees
Shrubs Provided	11 Shrubs	Shrubs Required	110 Shrubs (551 / 50) x 6
Land Use Buffer A Land Use Buffer Length	419'	Shrubs Provided	110 Shrubs
Trees Required	42 Trees (419' / 20') x 2	Woodland Replacement Replacement Required	316"
Trees Provided	42 Trees (33 Existing)	Replacement Trees Caliper Provided	202"
Shrubs Required	84 Shrubs (419' / 20') x 4	Remaining Caliper to be Provided	114"
Shrubs Provided	84 Shrubs		

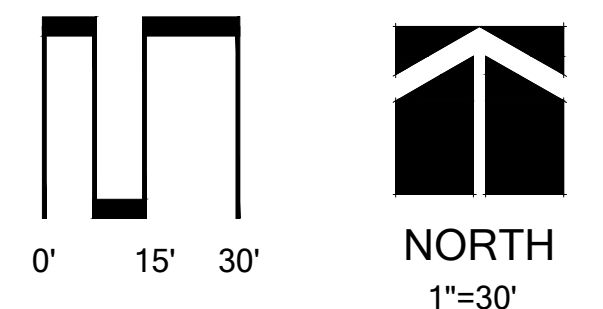
The Remaining 114" will be
 Planted at Locations to be Determined
 on the Meadowbrook Country Club Property.

Plant List

sym.	qty.	botanical name	common name	caliper	spacing	root	height
Greenbelt							
AFG	2	Acer x. freemanii 'Autumn Blaze'	Autumn Blaze Maple	3.0"	as shown	B&B	
POG	11	Physocarpus opulifolius 'Summer Wine'	Summer Wine Ninebark		as shown	cont	36"
	2	Trees Provided					
	11	Shrubs Provided					
Land Use Buffer							
CSL	31	Cornus sericea 'Artic Fire'	Artic Fire Dogwood		as shown	cont	36"
JCL	38	Juniperus ch. 'Keteleer'	Keteleer Juniper		as shown	B&B	6'
MSL	9	Malus 'Spring Snow'	Spring Snow Crab	2.5"	as shown	B&B	
POL	15	Physocarpus opulifolius 'Summer Wine'	Summer Wine Ninebark		as shown	cont	36"
	9	Trees Provided					
	84	Shrubs Provided					
Parking Lot							
ARR	2	Acer rubrum 'October Glory'	October Glory Red Maple	3.0"	as shown	B&B	
ASP	1	Acer saccharum 'Green Mountain'	Green Mountain Sugar Maple	3.0"	as shown	B&B	
LTP	4	Liriodendron tulipifera	Tulip Tree	3.0"	as shown	B&B	
	9	Trees Provided					
Building Fronts and Interior Grounds							
EAB	15	Euonymus alata 'Compacta'	Compact Burning Bush		as shown	cont	36"
HPB	3	Hydrangea paniculata 'Little Quickfire'	Little Quickfire Panicle Hydrangea		as shown	cont	36"
PAB	11	Picea abies	Norway Spruce		as shown	B&B	8'
PGB	16	Picea glauca 'Densata'	Black Hills Spruce		as shown	B&B	8'
POB	25	Physocarpus opulifolius 'Summer Wine'	Summer Wine Ninebark		as shown	cont	36"
	27	Trees Provided					
	43	Shrubs Provided					
Detention Pond							
ARD	3	Acer rubrum 'October Glory'	October Glory Red Maple	3.0"	as shown	B&B	
CAD	40	Cornus amomum	Silky Dogwood		as shown	cont	36"
CRD	40	Cornus racemosa	Gray Dogwood		as shown	cont	36"
CSD	30	Cornus sericea	Recoiler Dogwood		as shown	cont	36"
LTD	4	Liriodendron tulipifera	Tulip Tree	3.0"	as shown	B&B	
PAD	6	Picea abies	Norway Spruce		as shown	B&B	8'
PSD	5	Pinus strobus	White Pine		as shown	B&B	8'
OMB	4	Quercus macrocarpa	Burr Oak	3.0"	as shown	B&B	
	110	Shrubs Provided					
	22	Trees Provided					
Woodland Replacements							
ARR	2	Acer rubrum 'October Glory'	October Glory Red Maple	3.0"	as shown	B&B	
ASR	3	Acer saccharum 'Green Mountain'	Green Mountain Sugar Maple	3.0"	as shown	B&B	
LTR	4	Liriodendron tulipifera	Tulip Tree	3.0"	as shown	B&B	
PAR	19	Picea abies	Norway Spruce		as shown	B&B	8'
PGR	13	Picea glauca 'Densata'	Black Hills Spruce		as shown	B&B	8'
PLR	5	Platanus x acerifolia 'Exclamation'	Exclamation London Planetree	3.0"	as shown	B&B	
PSR	24	Pinus strobus	White Pine		as shown	B&B	8'
	42	Deciduous Tree Inches Provided (14 X 3)					
	160	Evergreen Tree Inches Provided (8' / 2.8) x 56					
	202	Total Inches					

Job Number:
 21-039

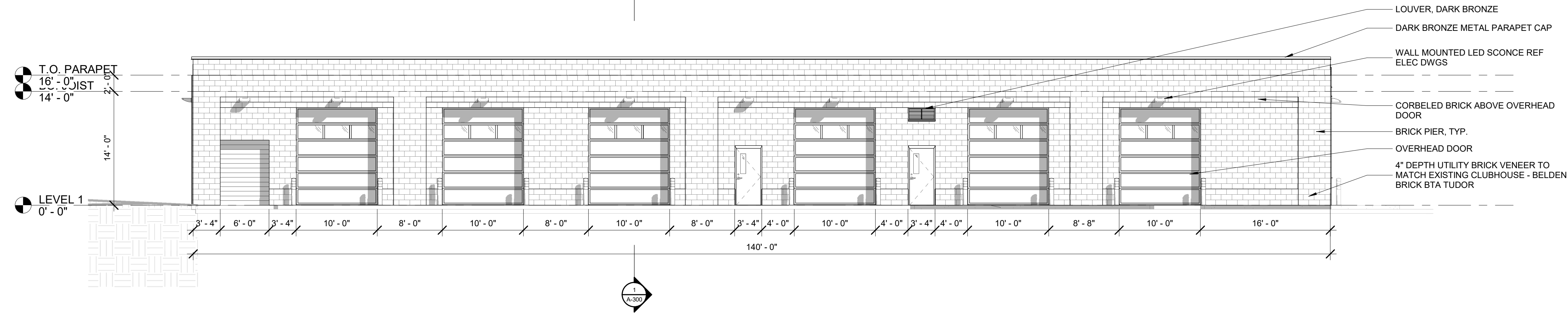
Drawn By: jca
 Checked By: jca



Sheet No.



ISSUED FOR	DATE
1 DESIGN DEVELOPMENT 100	07.09.21
2 CD PROGRESS SET	08.05.21
3 PSP SUBMITTAL	08.26.21
6 PS SUBMITTAL	12/20/21
7 SITE PLAN REVISIONS	03/08/22



2 SOUTH ELEVATION
 SCALE: 1/8" = 1'-0"

GENERAL NOTES

1. ALL MASONRY AND MORTAR JOINTS TO BE INTEGRALLY FIELD APPLIED WITH WATER REPELLANT SEALER.
2. SEE STRUCTURAL DRAWINGS FOR RECOMMENDED MASONRY CONTROL JOINTS. FINAL LOCATIONS TO BE APPROVED BY ARCHITECT.



1 EAST ELEVATION
 SCALE: 1/8" = 1'-0"



BELDEN BRICK BTA TUDOR DARTEX

PROJECT

MCC

40941 Eight Mile Rd,
 Northville, MI 48167

SHEET

**BUILDING
 ELEVATIONS**

STAMP

**NOT FOR
 CONSTRUCTION**

SCALE

As indicated

PROJECT NUMBER

2106.00

SHEET NUMBER

A-200