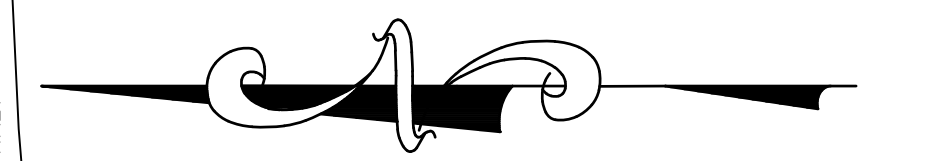
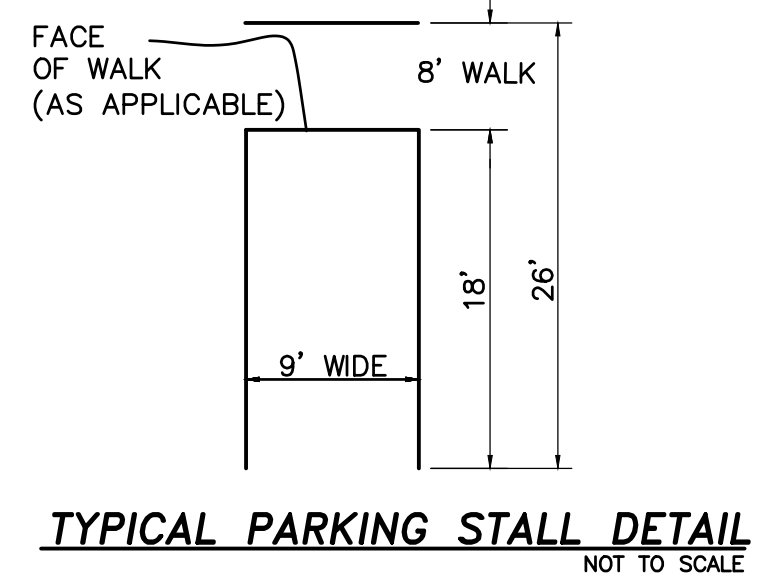


TYPICAL PAVEMENT CROSS-SECTIONS
NOT TO SCALE

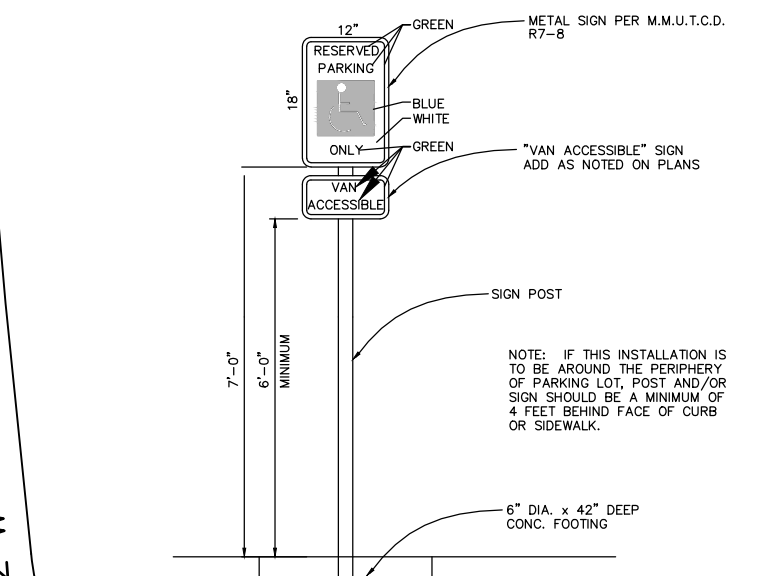
- WAYNE COUNTY LEGEND**
- SAW CUT FULL DEPTH THE EXISTING PAVEMENT AT 1.0-FOOT FROM THE BACK OF CURB AND REMOVE THE PAVEMENT AND THE CURB ALONG THE ENTIRE LENGTH OF THE DRIVE APPROACH OR AS DIRECTED BY THE COUNTY ENGINEER.
 - CONSTRUCT THE DRIVE APPROACH OPENING PER WAYNE COUNTY DETAIL D-6 OR AS DIRECTED BY THE COUNTY ENGINEER.
 - TIE THE NEW PAVEMENT TO THE EXISTING PAVEMENT WITH 18-INCH LONG #5 EPOXY COATED REBAR AT 18-INCH ON CENTER PER WAYNE COUNTY DETAIL RS-2 OR AS DIRECTED BY THE COUNTY ENGINEER.
 - CONSTRUCT THE PROPOSED DRIVE APPROACH WITH MINIMUM 8-INCH NON-REINFORCED CONCRETE WITH INTEGRAL STRAIGHT CURB TYPE "3" PER WAYNE COUNTY DETAIL RS-3 OVER 6-INCH MINIMUM OF 21AA AGGREGATE BASE COURSE COMPACTED IN PLACE TO A MINIMUM OF 95% DENSITY OF MAXIMUM UNIT WEIGHT PER WAYNE COUNTY DETAIL D-6 OR AS DIRECTED BY THE COUNTY ENGINEER.
 - CONSTRUCT THE PROPOSED DRIVE APPROACH WITH 6% MAXIMUM SLOPE.
 - RESTORE THE ROAD-OF-WAY PER NOTE 3 IN THE WAYNE COUNTY GENERAL NOTES OR AS DIRECTED BY THE COUNTY ENGINEER.



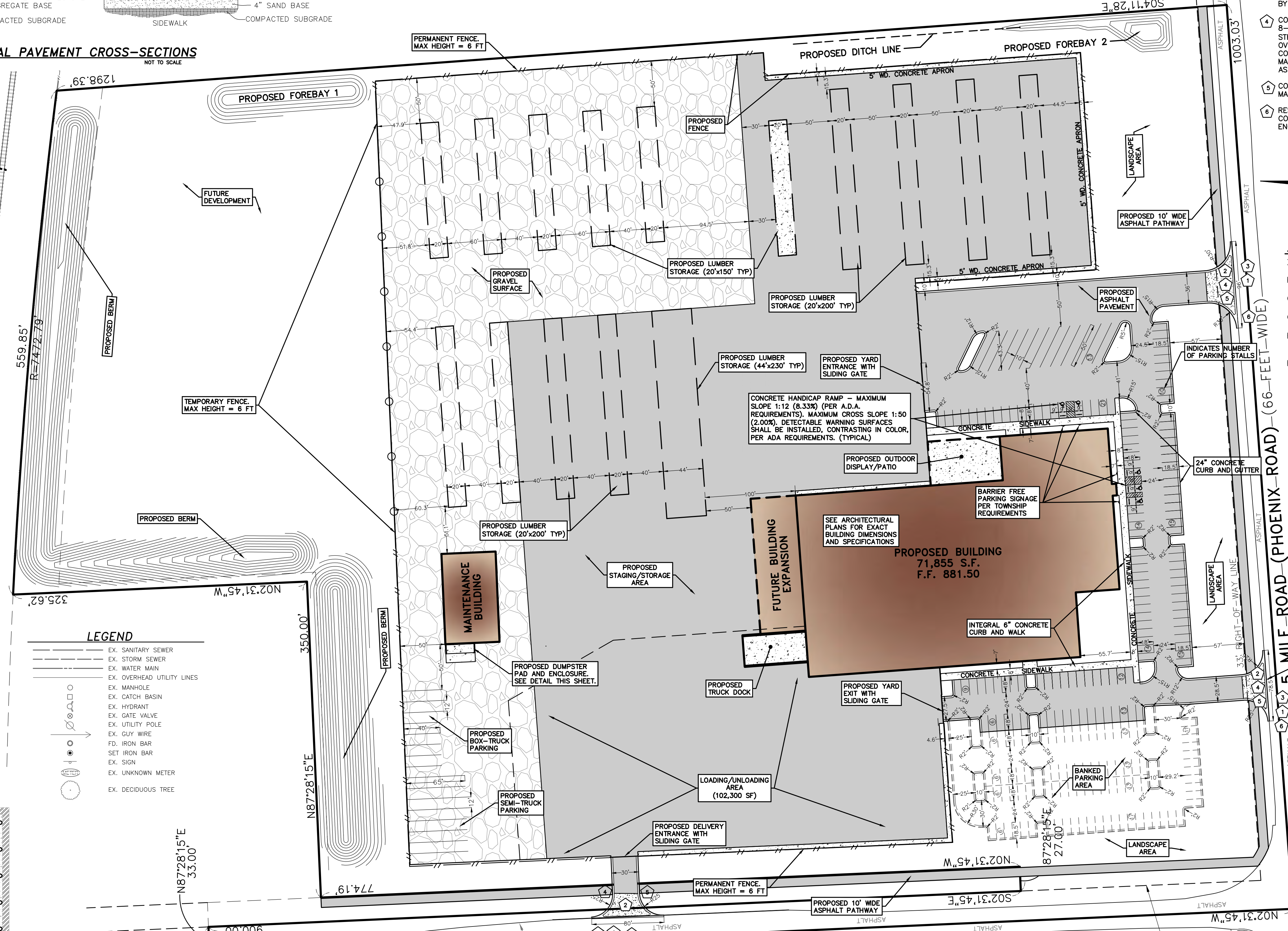
SITE STATISTICS:
 ZONED: I-1, INDUSTRIAL DISTRICT
 POTENTIAL USE GROUPS: LIGHT INDUSTRIAL
 CONSTRUCTION TYPE: II-B (UNPROTECTED)
 GROSS SITE AREA: 432,375 S.F. (6.44 ACRES)
 BUILDING HEIGHT: 46'-0" T.O.M.
 45'-0" T.O.M.
 BUILDING SETBACKS:
 FRONT - 25'
 REAR - 50'
 SIDE - 20'



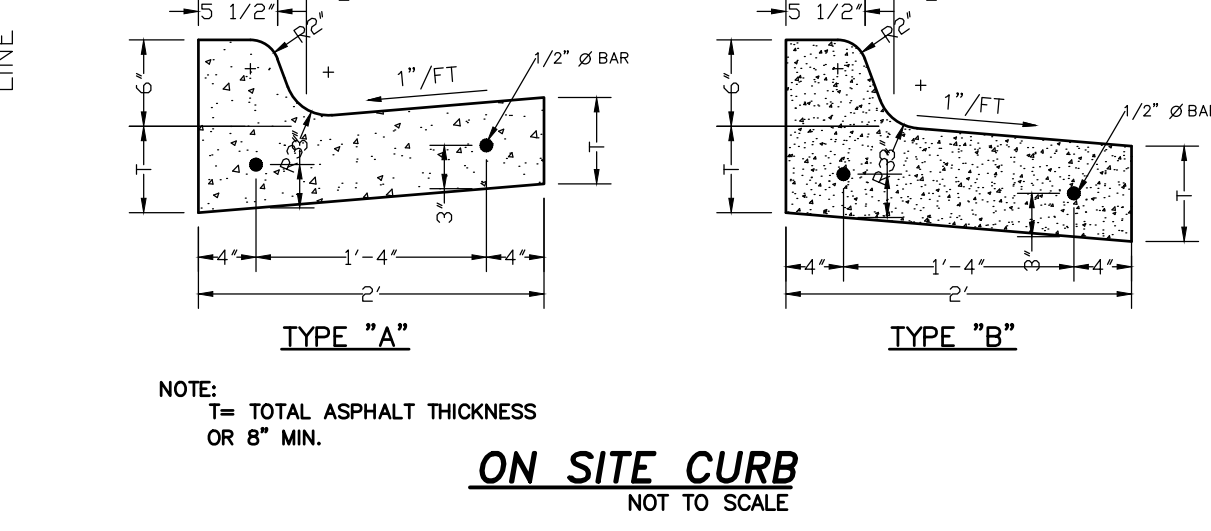
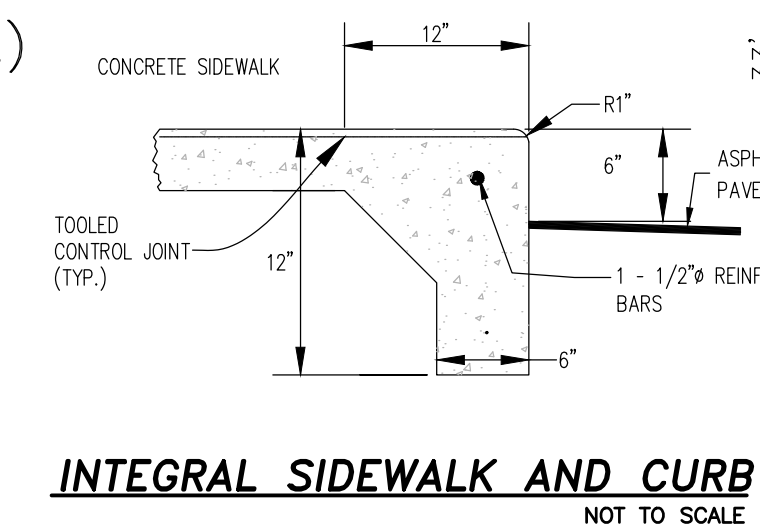
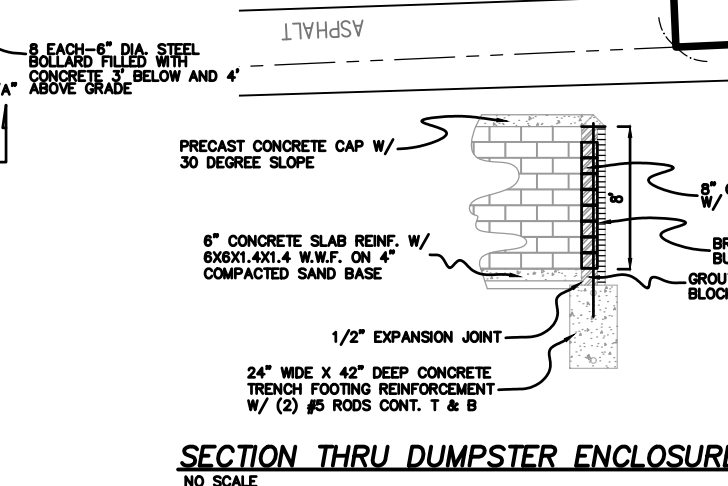
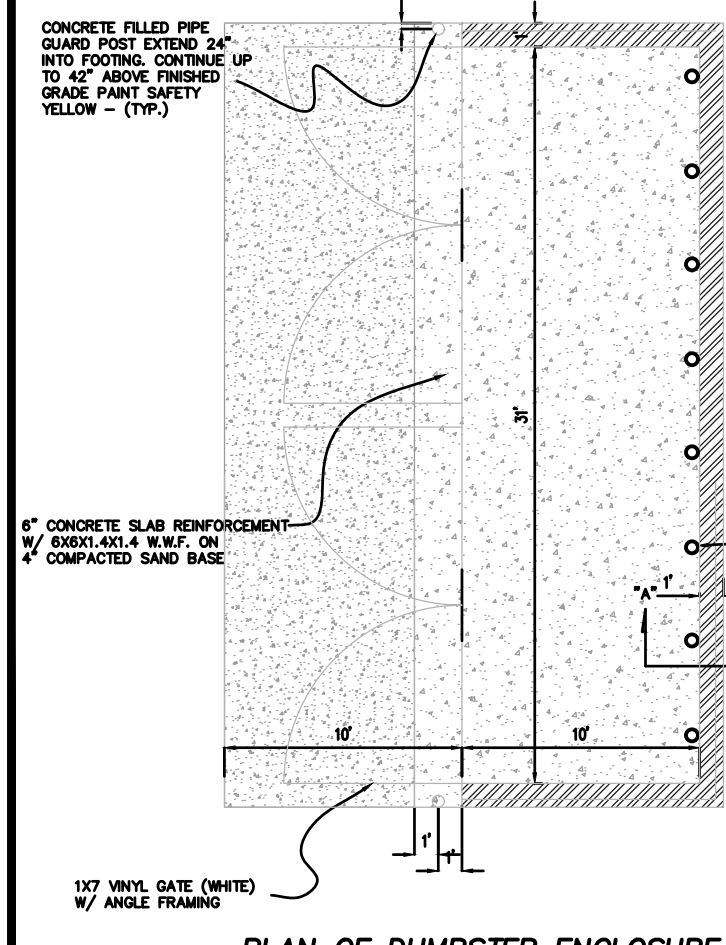
CONCRETE APPROACH WITH INTEGRAL CURB PER NORTHVILLE TOWNSHIP REQUIREMENTS. CURB TYPE TO MATCH EXISTING IN R.O.W. CONCRETE JOINING PER M.D.O.T. AND CITY REQUIREMENTS. TIE INTO EXISTING CURB AT ENDS PER TOWNSHIP AND M.D.O.T. STANDARDS.



CHESAPEAKE & OHIO R.R.
(99 FEET WIDE)



- LEGEND**
- EX. SANITARY SEWER
 - EX. STORM SEWER
 - EX. WATER MAIN
 - EX. OVERHEAD UTILITY LINES
 - EX. MANHOLE
 - EX. CATCH BASIN
 - EX. HYDRANT
 - EX. GATE VALVE
 - EX. UTILITY POLE
 - EX. GUY WIRE
 - FD. IRON BAR
 - SET IRON BAR
 - EX. SIGN
 - EX. UNKNOWN METER
 - EX. DECIDUOUS TREE



GREENTECH ENGINEERING, INC.
 CIVIL ENGINEERS & LAND SURVEYORS
 51147 W. Pontiac Trail, Wixom, MI 48393
 Phone: (248) 668-0700 Fax: (248) 668-0701

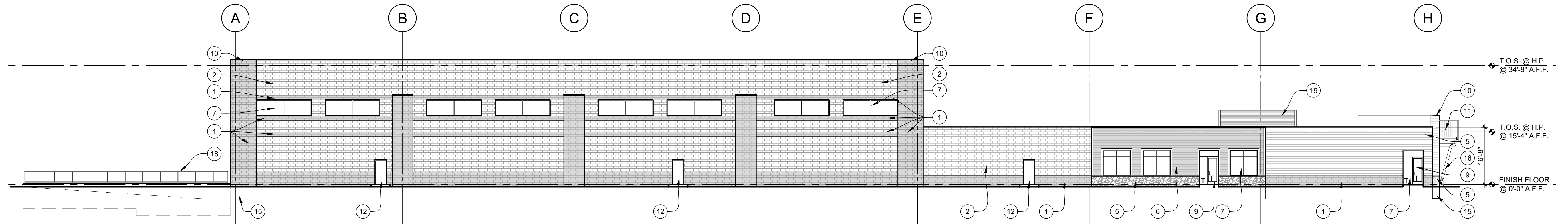
811
 Know what's below
 Call before you dig.

DIMENSION & PAVING PLAN
 NORTHVILLE LUMBER - PARCEL 77-071-99-0002-701
 SECTION 18
 TOWNSHIP 1 S
 RANGE: 8 E.
 NORTHVILLE TOWNSHIP
 WAYNE COUNTY
 MICHIGAN

CLIENT: NORTHVILLE LUMBER
 REVISED
 DATE: 10-28-2022
 DRAWN BY: RMS
 CHECKED BY: LW
 FBK: -
 CHF: MM
 SCALE: HOR 1"=60 FT.
 VER 1"=6 FT.
 2
 20-372

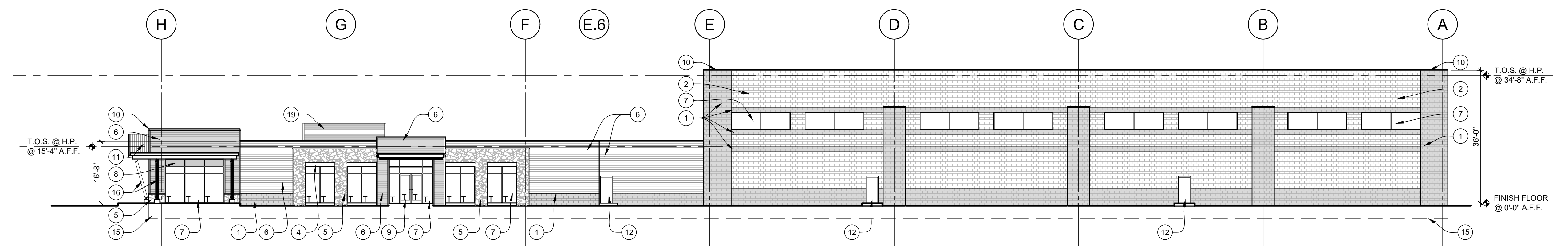
Tree List

REGULATED	LANDMARK	REMOVAL	REGULATED	LANDMARK	REMOVAL	REGULATED	LANDMARK	REMOVAL	REGULATED	LANDMARK	REMOVAL	REGULATED	LANDMARK	REMOVAL	REGULATED	LANDMARK	REMOVAL																					
TAG NO.	DIAMETER	COMMON NAME	BOTANICAL NAME	CONDITION	STATUS	LANDMARK	TAG NO.	DIAMETER	COMMON NAME	BOTANICAL NAME	CONDITION	STATUS	LANDMARK	TAG NO.	DIAMETER	COMMON NAME	BOTANICAL NAME	CONDITION	STATUS	LANDMARK	TAG NO.	DIAMETER	COMMON NAME	BOTANICAL NAME	CONDITION	STATUS	LANDMARK	TAG NO.	DIAMETER	COMMON NAME	BOTANICAL NAME	CONDITION	STATUS	LANDMARK				
3601	11	Black Walnut	Juglans nigra	Good	Remove	11	3711	13	Black Walnut	Juglans nigra	Good	Remove	10	3821	40	Black Willow	Salix nigra	Fair	Remove	Yes	46	3821	40	Black Willow	Salix nigra	Fair	Remove	Yes	46	3821	40	Black Willow	Salix nigra	Fair	Remove	Yes	46	
3602	15	Black Walnut	Juglans nigra	Good	Remove	15	3712	19	Black Walnut	Juglans nigra	Good	Remove	19	3822	30	Black Walnut	Juglans nigra	Good	Remove	Yes	8	3822	30	Black Walnut	Juglans nigra	Good	Remove	Yes	8	3822	30	Black Walnut	Juglans nigra	Good	Remove	Yes	8	
3603	8	Black Walnut	Juglans nigra	Good	Remove	8	3713	10	Black Walnut	Juglans nigra	Good	Remove	10	3823	8	Black Walnut	Juglans nigra	Good	Remove	Yes	10	3823	8	Black Walnut	Juglans nigra	Good	Remove	Yes	10	3823	8	Black Walnut	Juglans nigra	Good	Remove	Yes	10	
3604	11	Black Walnut	Juglans nigra	Good	Remove	11	3714	7	Black Walnut	Juglans nigra	Good	Exempt		3824	10	Black Walnut	Juglans nigra	Good	Remove			3824	10	Black Walnut	Juglans nigra	Good	Remove			3824	10	Black Walnut	Juglans nigra	Good	Remove			
3605	11	Black Walnut	Juglans nigra	Good	Remove	11	3715	7	Black Walnut	Juglans nigra	Good	Exempt		3825	7	Black Locust	Robinia pseudoacacia	Good	Exempt			3825	7	Black Locust	Robinia pseudoacacia	Good	Exempt			3825	7	Black Locust	Robinia pseudoacacia	Good	Exempt			
3606	9	Black Walnut	Juglans nigra	Good	Remove	9	3716	8	Black Walnut	Juglans nigra	Good	Remove	8	3826	7	Black Locust	Robinia pseudoacacia	Good	Exempt			3826	7	Black Locust	Robinia pseudoacacia	Good	Exempt			3826	7	Black Locust	Robinia pseudoacacia	Good	Exempt			
3607	9	Black Walnut	Juglans nigra	Good	Remove	9	3717	12	Box Elder	Acer negundo	Good	Exempt		3827	10	Box Elder	Acer negundo	Good	Exempt			3827	10	Box Elder	Acer negundo	Good	Exempt			3827	10	Box Elder	Acer negundo	Good	Exempt			
3608	9, 12	Common Apple	Malus spp	Fair	Remove	21	3718	17	Black Walnut	Juglans nigra	Good	Remove	17	3828	13	Black Locust	Robinia pseudoacacia	Good	Exempt			3828	13	Black Locust	Robinia pseudoacacia	Good	Exempt			3828	13	Black Locust	Robinia pseudoacacia	Good	Exempt			
3609	12	Green Ash	Fraxinus pennsylvanica	Exit Wounds	Exempt		3719	8	Black Walnut	Juglans nigra	Good	Remove	8	3829	9	Black Walnut	Juglans nigra	Good	Remove			3829	9	Black Walnut	Juglans nigra	Good	Remove			3829	9	Black Walnut	Juglans nigra	Good	Remove			
3610	10	Black Walnut	Juglans nigra	Good	Remove	10	3720	8	Black Walnut	Juglans nigra	Good	Remove	8	3830	17	Black Locust	Robinia pseudoacacia	Good	Exempt			3830	17	Black Locust	Robinia pseudoacacia	Good	Exempt			3830	17	Black Locust	Robinia pseudoacacia	Good	Exempt			
3611	11	Black Walnut	Juglans nigra	Good	Remove	11	3721	6	Black Walnut	Juglans nigra	Good	Remove	6	3831	13	Black Locust	Robinia pseudoacacia	Good	Exempt			3831	13	Black Locust	Robinia pseudoacacia	Good	Exempt			3831	13	Black Locust	Robinia pseudoacacia	Good	Exempt			
3612	9	Black Walnut	Juglans nigra	Good	Remove	9	3722	21	Black Walnut	Juglans nigra	Good	Remove	Yes	21	3832	8	Black Locust	Robinia pseudoacacia	Good	Exempt			3832	8	Black Locust	Robinia pseudoacacia	Good	Exempt			3832	8	Black Locust	Robinia pseudoacacia	Good	Exempt		
3613	9	Black Walnut	Juglans nigra	Good	Remove	9	3723	8	Black Walnut	Juglans nigra	Good	Remove	8	3833	7	Black Locust	Robinia pseudoacacia	Good	Exempt			3833	7	Black Locust	Robinia pseudoacacia	Good	Exempt			3833	7	Black Locust	Robinia pseudoacacia	Good	Exempt			
3614	8	Buckthorn - not a tree	Juglans nigra	Good	Exempt		3724	12	Black Walnut	Juglans nigra	Good	Remove	12	3834	8	Black Locust	Robinia pseudoacacia	Good	Exempt			3834	8	Black Locust	Robinia pseudoacacia	Good	Exempt			3834	8	Black Locust	Robinia pseudoacacia	Good	Exempt			
3615	12	Black Walnut	Juglans nigra	Good	Remove	12	3725	10	Black Walnut	Juglans nigra	Good	Remove	10	3835	8	Black Locust	Robinia pseudoacacia	Good	Exempt			3835	8	Black Locust	Robinia pseudoacacia	Good	Exempt			3835	8	Black Locust	Robinia pseudoacacia	Good	Exempt			
3616	13	Black Walnut	Juglans nigra	Good	Remove	13	3726	10	Black Walnut	Juglans nigra	Good	Remove	10	3836	10	Black Locust	Robinia pseudoacacia	Good	Exempt			3836	10	Black Locust	Robinia pseudoacacia	Good	Exempt			3836	10	Black Locust	Robinia pseudoacacia	Good	Exempt			
3617	11	Black Walnut	Juglans nigra	Good	Remove	11	3727	15	Black Walnut	Juglans nigra	Good	Remove	15	3837	7	Black Locust	Robinia pseudoacacia	Good	Exempt			3837	7	Black Locust	Robinia pseudoacacia	Good	Exempt			3837	7	Black Locust	Robinia pseudoacacia	Good	Exempt			
3618	12	Black Walnut	Juglans nigra	Good	Remove	12	3728	7	Black Walnut	Juglans nigra	Good	Exempt		3838	10	Black Locust	Robinia pseudoacacia	Good	Exempt			3838	10	Black Locust	Robinia pseudoacacia	Good	Exempt			3838	10	Black Locust	Robinia pseudoacacia	Good	Exempt			
3619	18	Black Walnut	Juglans nigra	Good	Remove	18	3729	14	Box Elder	Acer negundo	Good	Exempt		3839	9	Black Locust	Robinia pseudoacacia	Good	Exempt			3839	9	Black Locust	Robinia pseudoacacia	Good	Exempt			3839	9	Black Locust	Robinia pseudoacacia	Good	Exempt			
3620	12	Black Walnut	Juglans nigra	Good	Remove	12	3730	12	Black Cherry	Prunus serotina	Good	Remove	12	3840	8	Black Locust	Robinia pseudoacacia	Good	Exempt			3840	8	Black Locust	Robinia pseudoacacia	Good	Exempt			3840	8	Black Locust	Robinia pseudoacacia	Good	Exempt			
3621	14	Black Walnut	Juglans nigra	Good	Remove	14	3731	10	Box Elder	Acer negundo	Good	Exempt		3841	10	Black Walnut	Juglans nigra	Good	Remove			3841	10	Black Walnut	Juglans nigra	Good	Remove			3841	10	Black Walnut	Juglans nigra	Good	Remove			
3622	8, 8	Black Walnut	Juglans nigra	Good	Remove	16	3732	13	Box Elder	Acer negundo	Good	Exempt		3842	15	Black Locust	Robinia pseudoacacia	Good	Exempt			3842	15	Black Locust	Robinia pseudoacacia	Good	Exempt			3842	15	Black Locust	Robinia pseudoacacia	Good	Exempt			
3623	8	Black Walnut	Juglans nigra	Good	Remove	8	3733	23	Black Walnut	Juglans nigra	Good	Remove	Yes	23	3843	10	Black Locust	Robinia pseudoacacia	Good	Exempt			3843	10	Black Locust	Robinia pseudoacacia	Good	Exempt			3843	10	Black Locust	Robinia pseudoacacia	Good	Exempt		
3624	8	Common Apple	Malus spp	Fair	Remove	8	3734	15	Sugar Maple	Acer saccharum	Good	Remove	Yes	15	3844	8	Mulberry	Morus alba	Good	Exempt			3844	8	Mulberry	Morus alba	Good	Exempt			3844	8	Mulberry	Morus alba	Good	Exempt		
3625	5, 8	Common Apple	Malus spp	Fair	Remove	8	3735	9	Sugar Maple	Acer saccharum	Good	Remove	9	3845	10	Black Locust	Robinia pseudoacacia	Good	Exempt			3845	10	Black Locust	Robinia pseudoacacia	Good	Exempt			3845	10	Black Locust	Robinia pseudoacacia	Good	Exempt			
3626	12	Black Walnut	Juglans nigra	Good	Exempt		3736	11	Black Walnut	Juglans nigra	Good	Save		3846	8, 10	Black Locust	Robinia pseudoacacia	Good	Exempt			3846	8, 10	Black Locust	Robinia pseudoacacia	Good	Exempt			3846	8, 10	Black Locust	Robinia pseudoacacia	Good	Exempt			
3627	24	Box Elder	Acer negundo	Good	Exempt		3737	8	Black Walnut	Juglans nigra	Good	Save		3847	12	Black Locust	Robinia pseudoacacia	Good	Exempt			3847	12	Black Locust	Robinia pseudoacacia	Good	Exempt			3847	12	Black Locust	Robinia pseudoacacia	Good	Exempt			
3628	18	Sugar Maple	Acer saccharum	Good	Remove	Yes	3738	17	Bitternut Hickory	Carya cordiformis	Good	Save		3848	0, 0	Black Locust	Robinia pseudoacacia	Good	Exempt			3848	0, 0	Black Locust	Robinia pseudoacacia	Good	Exempt			3848	0, 0	Black Locust	Robinia pseudoacacia	Good	Exempt			
3629	5, 7	Common Apple	Malus spp	Fair	Remove	18	3739	12	Bitternut Hickory	Carya cordiformis	Good	Remove	12	3849	8	Black Locust	Robinia pseudoacacia	Good	Exempt			3849	8	Black Locust	Robinia pseudoacacia	Good	Exempt			3849	8	Black Locust	Robinia pseudoacacia	Good	Exempt			
3630	5, 7, 8	Common Apple	Malus spp	Remove	Remove	8	3740	6	Bitternut Hickory	Carya cordiformis	Good	Save	7	3850	0	Black Locust	Robinia pseudoacacia	Good	Exempt			3850	0	Black Locust	Robinia pseudoacacia	Good	Exempt			3850	0	Black Locust	Robinia pseudoacacia	Good	Exempt			
3631	9	Black Walnut	Juglans nigra	Good	Remove	9	3741	7, 9	Black Locust	Robinia pseudoacacia	Good	Exempt		3851	0, 0, 0	Black Locust	Robinia pseudoacacia	Good	Exempt			3851	0, 0, 0	Black Locust	Robinia pseudoacacia	Good	Exempt			3851	0, 0, 0	Black Locust	Robinia pseudoacacia	Good	Exempt			
3632	9	Box Elder	Acer negundo	Good	Exempt		3742	9	Black Locust	Robinia pseudoacacia	Good	Exempt		3852	9	Black Locust	Robinia pseudoacacia	Good	Exempt			3852	9	Black Locust	Robinia pseudoacacia	Good	Exempt			3852	9	Black Locust	Robinia pseudoacacia	Good	Exempt			
3633	8	Box Elder	Acer negundo	Good	Exempt		3743	13	American Elm	Ulmus americana	Good	Save	9	3853	8	Black Walnut	Juglans nigra	Good	Remove			3853	8	Black Walnut	Juglans nigra	Good	Remove			3853	8	Black Walnut	Juglans nigra	Good	Remove			
3634	8	Box Elder	Acer negundo	Good	Exempt		3744	8	Box Elder	Acer negundo	Good	Exempt		3854	12	Black Locust	Robinia pseudoacacia	Good	Exempt			3854	12	Black Locust	Robinia pseudoacacia	Good	Exempt			3854	12	Black Locust	Robinia pseudoacacia	Good	Exempt			
3635	5, 6, 7	Common Apple	Malus spp	Fair	Exempt	17	3745	11	Sugar Maple	Acer saccharum	Good	Remove	11	3855	11	Black Walnut	Juglans nigra	Good	Remove			3855	11	Black Walnut	Juglans nigra	Good	Remove			3855	11	Black Walnut	Juglans nigra	Good	Remove			
3636	8, 11	Common Apple	Malus spp	Remove	Remove	17	3746	8	Box Elder	Acer negundo	Good	Exempt	8	3856	11	Black Walnut	Juglans nigra	Good	Remove			3856	11	Black Walnut	Juglans nigra	Good	Remove			3856	11	Black Walnut	Juglans nigra	Good	Remove			
3637	10	Box Elder	Acer negundo	Good	Exempt		3747	14	Sugar Maple	Acer saccharum	Good	Save		3857	6	Black Walnut	Juglans nigra	Good	Remove			3857	6	Black Walnut	Juglans nigra	Good	Remove			3857	6	Black Walnut	Juglans nigra	Good	Remove			
3638	8	Box Elder	Acer negundo	Good	Exempt		3748	9, 13	Black Locust	Robinia pseudoacacia	Good	Save		3858	11	Black Locust	Robinia pseudoacacia	Good	Exempt			3858	11	Black Locust	Robinia pseudoacacia	Good	Exempt			3858	11	Black Locust	Robinia pseudoacacia	Good	Exempt			
3639	8	Box Elder	Acer negundo	Good	Exempt		3749	8	Box Elder	Acer negundo	Good	Save	2	3859	11	Black Locust	Robinia pseudoacacia	Good	Exempt			3859	11	Black Locust	Robinia pseudoacacia	Good	Exempt			3859	11	Black Locust	Robinia pseudoacacia	Good	Exempt			
3640	8	Box Elder	Acer negundo	Good	Exempt		3750	9	American Elm	Ulmus americana	Good	Save		3860	12	Black Walnut	Juglans nigra	Good	Remove			3860	12	Black Walnut	Juglans nigra	Good	Remove			3860	12	Black Walnut	Juglans nigra	Good	Remove			
3641	9	Box Elder	Acer negundo	Good	Exempt		3751	10	Box Elder	Acer negundo	Good	Save		3861	9	Black Walnut	Juglans nigra	Good	Remove			3861	9	Black Walnut	Juglans nigra	Good	Remove			3861	9	Black Walnut	Juglans nigra	Good	Remove			
3642	15	Black Walnut	Juglans nigra	Good	Exempt		3752	13	American Elm	Ulmus americana	Good	Save		3862	8	Black Walnut	Juglans nigra	Good	Remove			3862	8	Black Walnut	Juglans nigra	Good	Remove			3862	8	Black Walnut	Juglans nigra	Good	Remove			
3643	9	Black Walnut	Juglans nigra	Good	Remove	9	3753	17	Box Elder	Acer negundo	Good	Exempt		3863	16	Black Walnut	Juglans nigra	Good	Remove			3863	16	Black Walnut	Juglans nigra	Good	Remove			3863	16	Black Walnut	Juglans nigra	Good	Remove			
3644	18	Black Walnut	Juglans nigra	Good	Remove	18	3754	7	Box Elder	Acer negundo	Good	Exempt		3864	7	Black Walnut	Juglans nigra	Good	Remove			3864	7	Black Walnut	Juglans nigra	Good	Remove			3864	7	Black Walnut	Juglans nigra	Good	Remove			
3645	7																																					



PRELIMINARY WEST ELEVATION
SCALE: 1/16" = 1'-0"

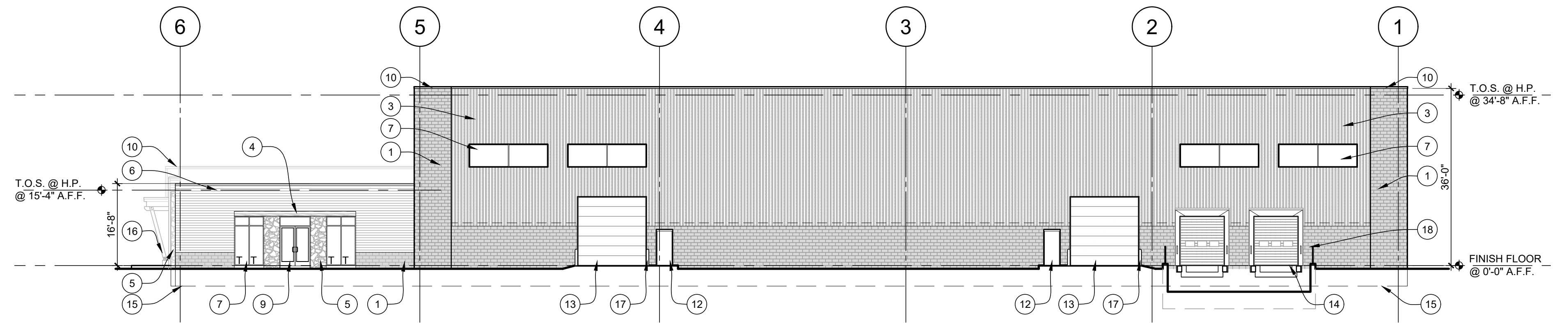
4



PRELIMINARY EAST ELEVATION
SCALE: 1/16" = 1'-0"

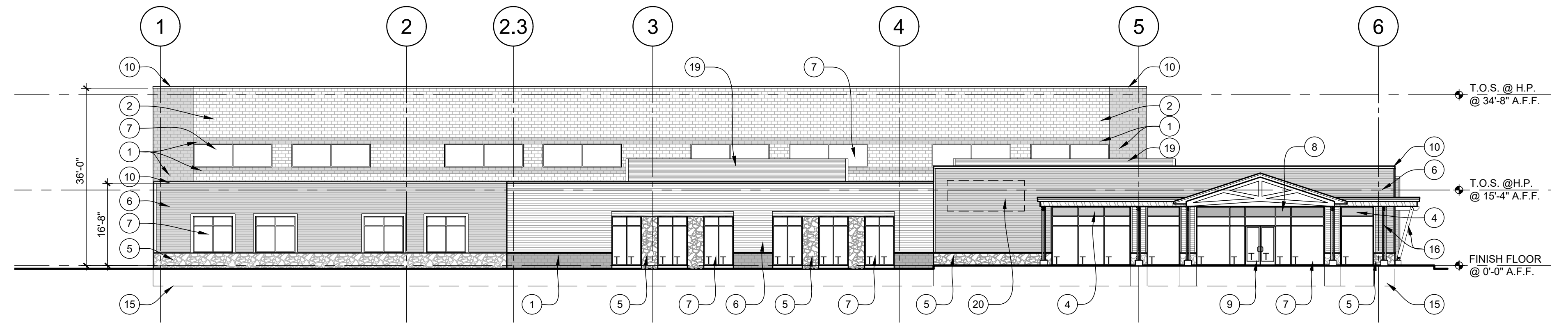
3

EXTERIOR MATERIAL SCHEDULE			
1	12" SPLIT-FACE CMU MANUFACTURER: TBD COLOR: TBD	11	STANDING SEAM METAL ROOF
2	12" SMOOTH-FACE CMU MANUFACTURER: TBD COLOR: TBD	12	HOLLOW METAL DOOR AND FRAME
3	INSULATED METAL PANEL	13	12'x14' SECTIONAL INSULATED OVERHEAD GRADE DOOR w/ MOTOR OPERATED OPENER
4	INSULATED CURTAIN WALL INFILL PANEL	14	9'x10' SECTIONAL INSULATED OVERHEAD TRUCK DOCK W/ DOCK LEVELER & SHELTER SEAL
5	STONE VENEER	15	CONC. TRENCH FOOTING BELOW
6	HORIZONTAL SIDING	16	DECORATIVE WOOD COLUMN. STAINED FINISH
7	1" TINTED LOW 'E' INSUL. GLAZING IN CLEAR ANOD. ALUM. THERMAL BREAK FRAMES	17	6" DIA. CONC. FILLED STEEL GUARD POST
8	1" TINTED LOW 'E' INSUL. TINTED SPANDREL GLAZING IN CLEAR ANOD. ALUM. THERMAL BREAK FRAMES	18	1 1/2" DIA. PAINTED STEEL PIPE GUARDRAIL
9	ANOD. ALUM. ENTRY DOOR W/ TEMPERED GLASS	19	FLUSH METAL PANEL SIDING (ROOF SCREENING)
10	PREFINISHED METAL COPING	20	PROPOSED BUILDING SIGN LOCATION (BY OWNER)



PRELIMINARY NORTH ELEVATION
SCALE: 1/16" = 1'-0"

2



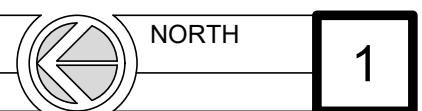
PRELIMINARY SOUTH ELEVATION
SCALE: 1/16" = 1'-0"

1



WAREHOUSE: 40,000 S.F.
 OFFICE / SHOWROOM: 31,800 S.F.
 TOTAL BUILDING: 71,800 S.F.

PRELIMINARY FLOOR PLAN
 SCALE: 1:20



ISSUED FOR:	SITE PLAN APPROVAL
DATE:	10-27-22
DRAWING DATE:	10-27-22
PROJECT NUMBER:	22061
SHEET NUMBER:	PFP-8