

Where Does the Rain Go?



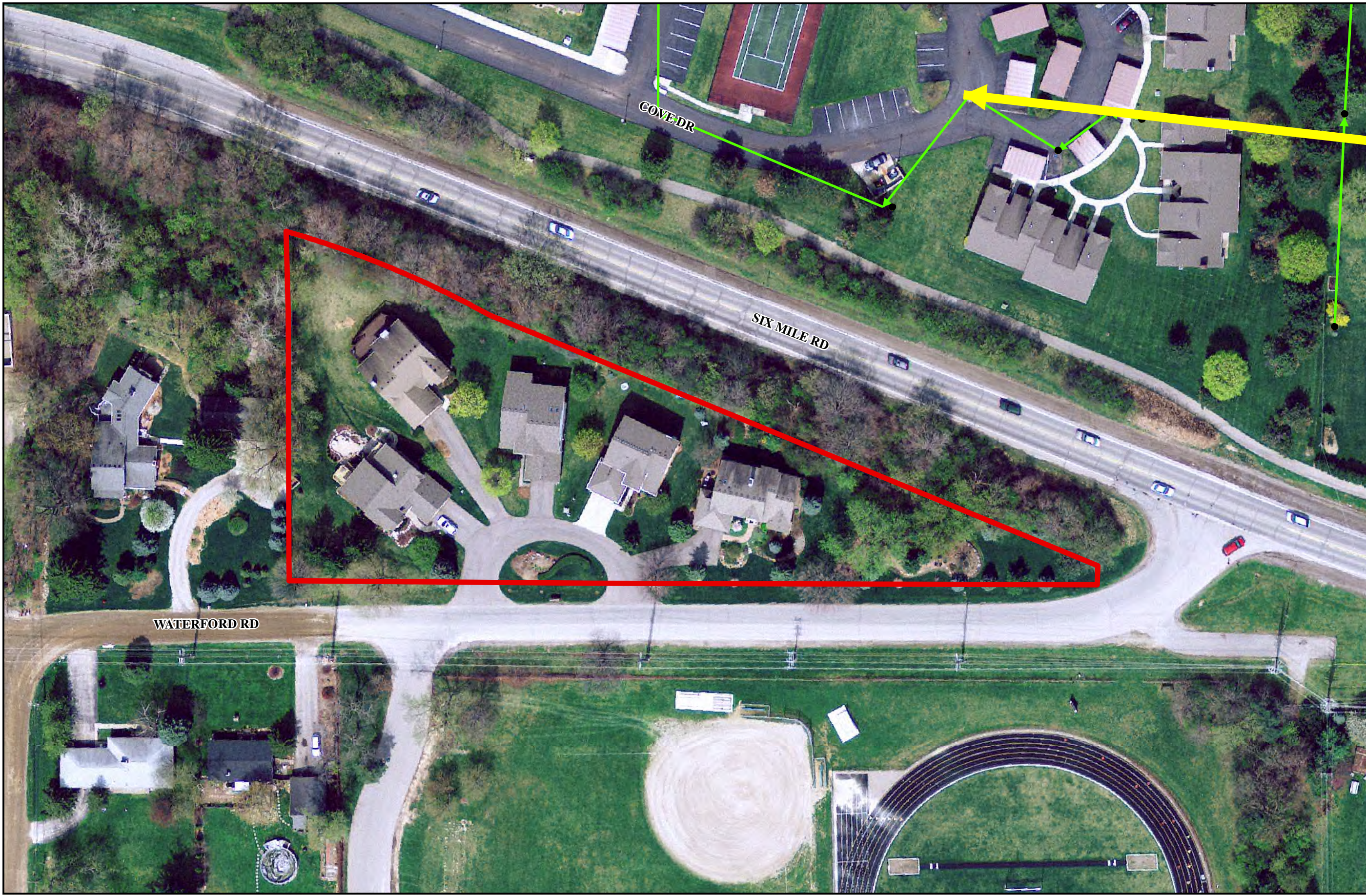
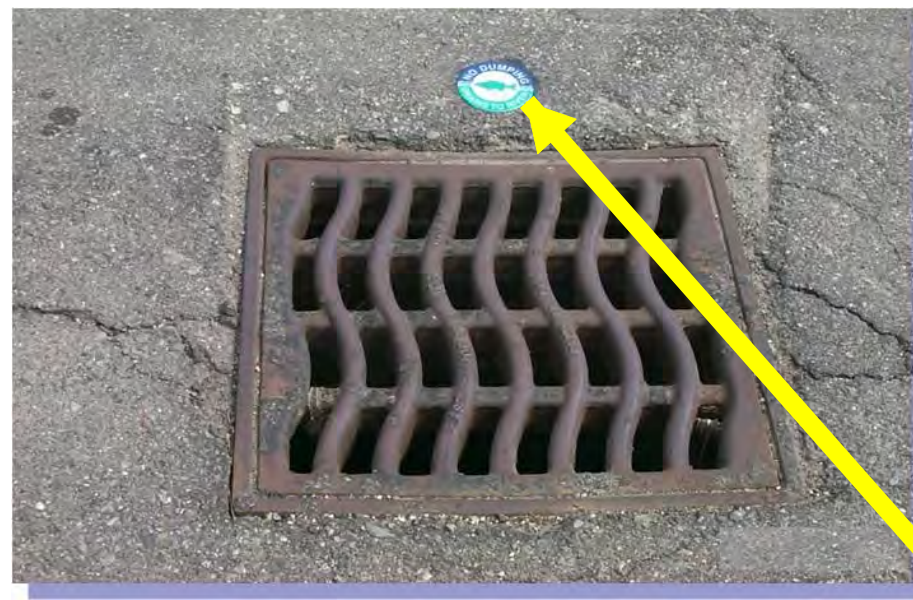
Follow the red arrows

Did you ever stop to think of where all the water goes when the rain falls or the snow melts?

Look for Catch Basin Markers

Catch basin markers remind us that catch basins are connected directly to our waterways...not to a treatment plant

BENTON'S CORNERS



Catch basins lead to storm drains, which flow directly to our lakes without treatment.

Why Does Car Care Matter?

All the dirt and grime from cars, such as leaking oil and antifreeze, often wind up on the driveways and is washed into the storm drains which are directly connected to our waterways.

Roadside litter and parking lot trash are also washed into the waterways.

What other Pollutants are from Residential Developments?

Salt applied during the winter eventually washes into storm drains.

Animal waste fertilizer, leaves and plant matter flow into storm drains and overload the rivers and lakes with decaying matter.

Concrete and asphalt heat the rainfall runoff and cause temperature spikes in rivers and lakes which can harm aquatic life.

Where Does the Rain Go?

- Manhole
- ★ End Section
- ▭ Subdivision Boundary
- Catch Basin/Inlet
- Storm Pipe

Rain or snow falling on streets, driveways, and lawns flow through catch basins and storm drain piping to the Rouge River without treatment.



Where Does the Rain Go?

The Rouge River flows into the Detroit River, then into Lake Erie, Niagara Falls and finally to the Atlantic Ocean.

